



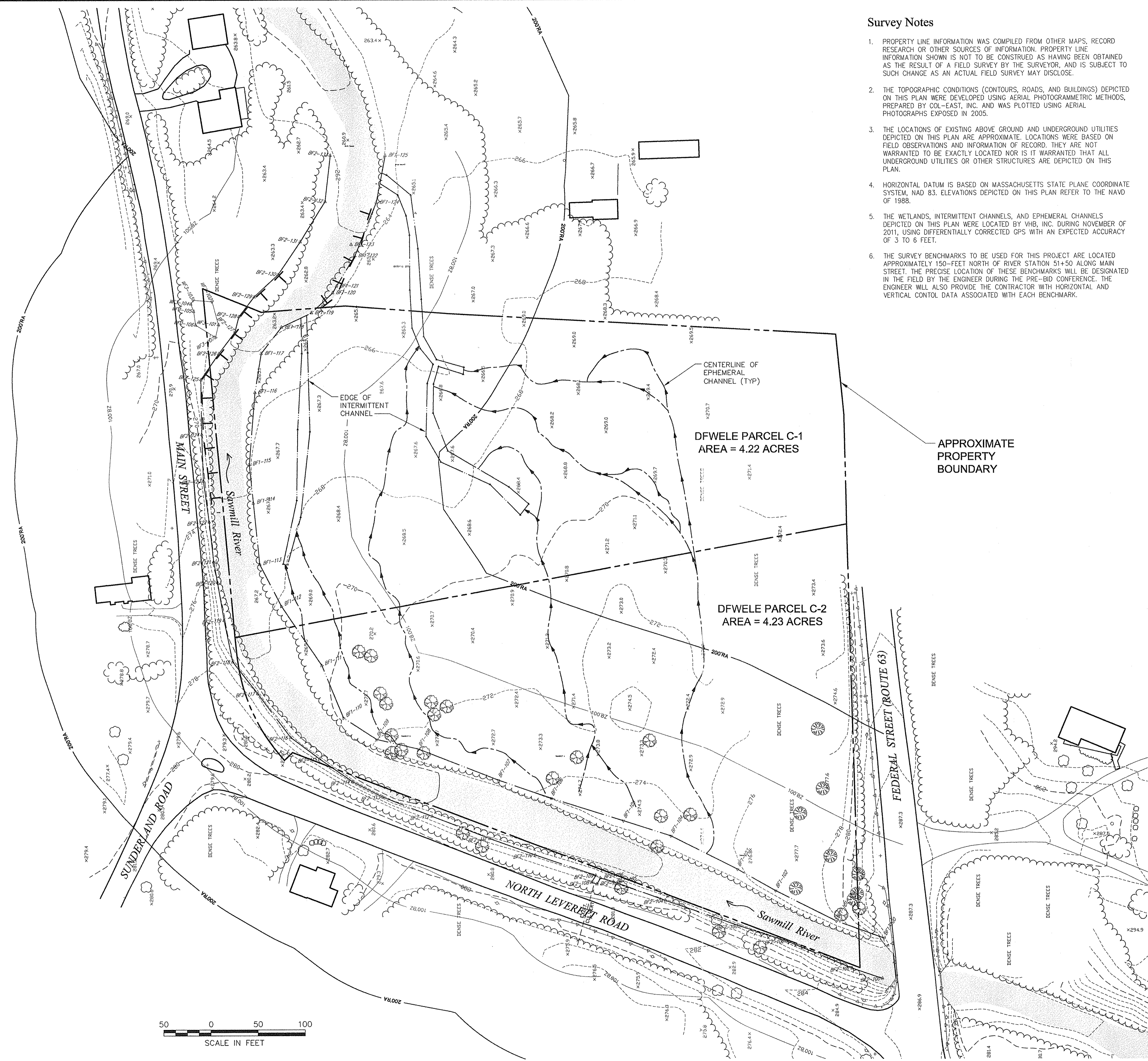
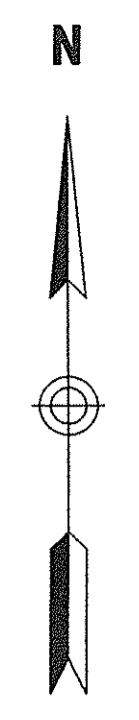
Vanasse Hangen Brustlin, Inc.

Transportation  
Land Development  
Environmental Services

101 Walnut Street, P.O. Box 9151  
Watertown, Massachusetts 02471  
617.924.1770 • FAX 617.924.2286

Survey Notes

- PROPERTY LINE INFORMATION WAS COMPILED FROM OTHER MAPS, RECORD RESEARCH OR OTHER SOURCES OF INFORMATION. PROPERTY LINE INFORMATION SHOWN IS NOT TO BE CONSTRUED AS HAVING BEEN OBTAINED AS THE RESULT OF A FIELD SURVEY BY THE SURVEYOR, AND IS SUBJECT TO SUCH CHANGE AS AN ACTUAL FIELD SURVEY MAY DISCLOSE.
- THE TOPOGRAPHIC CONDITIONS (CONTOURS, ROADS, AND BUILDINGS) DEPICTED ON THIS PLAN WERE DEVELOPED USING AERIAL PHOTOGRAMMETRIC METHODS, PREPARED BY COL-EAST, INC. AND WAS PLOTTED USING AERIAL PHOTOGRAPHS EXPOSED IN 2005.
- THE LOCATIONS OF EXISTING ABOVE GROUND AND UNDERGROUND UTILITIES DEPICTED ON THIS PLAN ARE APPROXIMATE. LOCATIONS WERE BASED ON FIELD OBSERVATIONS AND INFORMATION OF RECORD. THEY ARE NOT WARRANTED TO BE EXACTLY LOCATED NOR IS IT WARRANTED THAT ALL UNDERGROUND UTILITIES OR OTHER STRUCTURES ARE DEPICTED ON THIS PLAN.
- HORIZONTAL DATUM IS BASED ON MASSACHUSETTS STATE PLANE COORDINATE SYSTEM, NAD 83. ELEVATIONS DEPICTED ON THIS PLAN REFER TO THE NAVD OF 1988.
- THE WETLANDS, INTERMITTENT CHANNELS, AND EPHEMERAL CHANNELS DEPICTED ON THIS PLAN WERE LOCATED BY VHB, INC. DURING NOVEMBER OF 2011, USING DIFFERENTIALLY CORRECTED GPS WITH AN EXPECTED ACCURACY OF 3 TO 6 FEET.
- THE SURVEY BENCHMARKS TO BE USED FOR THIS PROJECT ARE LOCATED APPROXIMATELY 150- FEET NORTH OF RIVER STATION 51+50 ALONG MAIN STREET. THE PRECISE LOCATION OF THESE BENCHMARKS WILL BE DESIGNATED IN THE FIELD BY THE ENGINEER DURING THE PRE-BID CONFERENCE. THE ENGINEER WILL ALSO PROVIDE THE CONTRACTOR WITH HORIZONTAL AND VERTICAL CONTROL DATA ASSOCIATED WITH EACH BENCHMARK.



Legend

- - - - - EXISTING MINOR CONTOUR
- - - - - EXISTING MAJOR CONTOUR
- - - - - APPROXIMATE LOCATION OF EPHEMERAL FLOODPLAIN CHANNEL
- T T T ERODING BANK AREAS
- BF-112 TOP OF BANK/OHW
- 100' BZ 100' BUFFER ZONE
- 200' RA 200' RIVERFRONT AREA

No.	Revision	Date	Appr.

Designed by CBS	Drawn by DP	Checked by MV
CAD checked by MF	Approved by MV	
Scale 1"=50'	Date July 2, 2012	

Project Title  
**Sawmill River  
Priority Reach 1  
Stabilization/Enhancement  
Project**  
Montague, Massachusetts

Issued for  
**Bidding & Construction**

Existing Conditions Plan

Drawing Number  
**C-1**

Sheet of  
**1 7**

Project Number  
**11648.00**

11648-EC.DWG

